

FLOOR PLAN KEYNOTES

- 1 ENTRY CLOSET WITH 12" D. SHELF AND FULL LENGTH POLE.
- 2 FORCED AIR FURNACE CLOSET WITH RETURN AIR BELOW GYPSUM BOARD W/ TAPE FINISH AT RETURN AIR PLENUM.
- 3 SPACE FOR TENANT-OWNED UPRIGHT FREEZER WITH CABINET ABOVE.
- 4 SPACE FOR TENANT OWNED CLOTHES WASHER WITH 12" D. CABINET ABOVE RECESSED HOSE/DRAIN BOX.
- 5 SPACE FOR TENANT OWNED CLOTHES DRYER WITH 12" D. CABINET ABOVE AND VENT TO EXTERIOR.
- 6 BROOM/UTILITY CABINET. 24" DEEP FULL HEIGHT.
- 7 PANTRY CABINET. 24" DEEP FULL HEIGHT.
- 8 LAZY SUSAN IN BASE CABINET.
- 9 REFRIGERATOR, 21 CUBIC FOOT CAPACITY WITH 12 INCH DEEP CABINET ABOVE. (ICE MAKER AND RECESSED WALL CONNECTION / SHUT-OFF AT PLAN 1 AND 2).
- 10 GAS RANGE/OVEN WITH ELECTRONIC IGNITION.

JONES RESIDENCE
167 FRANK DRIVE
RAMONA CA 92065

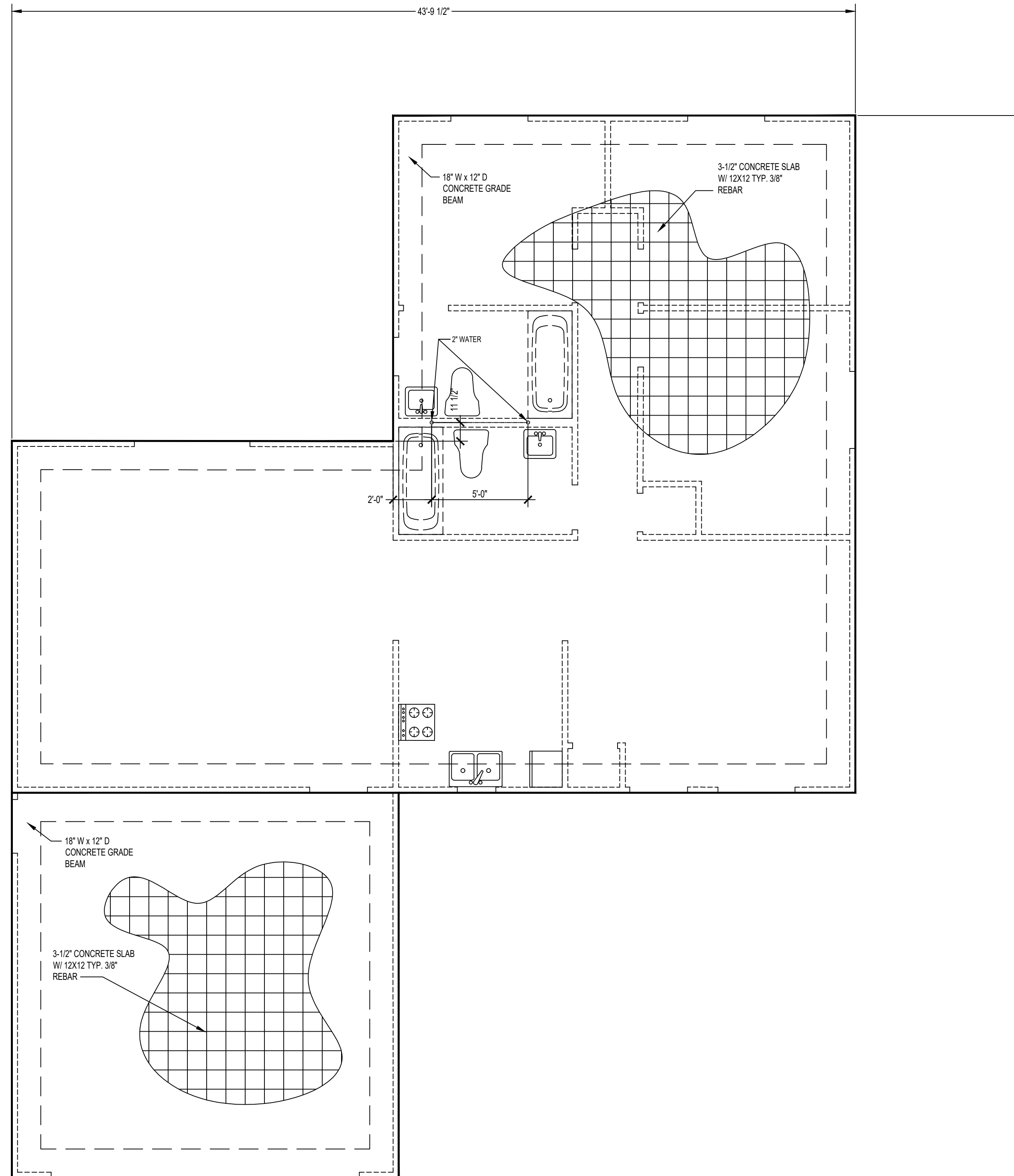
JONES RESIDENCE
167 FRANK DRIVE
RAMONA CA 92065

REVISION:

1. TODAY REVISED
- 2.
- 3.
- 4.
- 5.

PROJECT NR:	1234
DATE:	DATE
DRAWN BY:	Charles Froedge
CHECKED BY:	Al Whitley
SCALE:	AS NOTED
SHEET NUMBER:	

A2.1



GENERAL SHEET KEYNOTES

- 1 FOUNDATION WALL TO HAVE (1) #4 HORIZONTAL REINFORCEMENT W/ MATCHING CORNER BAR AT TOP AND (1) AT EACH MIDDLE THIRD, AND (1) #4 VERTICAL REINFORCEMENT AT 48" O.C. LOCATED WITH 1-1/4" CONCRETE COVER MEASURED FROM THE INSIDE FACE OF THE FOUNDATION WALL.
- 2 LOCATE 4" CONNECTION PIPE THROUGH BASE FOOTING WITHIN 5' OF EVERY CORNER AND EVERY 15' MAX ALONG LENGTH OF WALL SEGMENT WITH MIN OF 1 PER WALL SEGMENT.
- 3 LOCATE CONDENSATE DRAINS BASED ON LAYOUT OF MECHANICAL EQUIPMENT.
- 4 SEE A-XXX FOR FOUNDATION DETAILS.
- 5 SEE A-XXX FOR PENETRATION DETAILS.

.\\dcl-Logo-Titleblock.jpg

FROEDGE
167 MADISON STREET
OCEANSIDE CA 92057
 760-906-1806

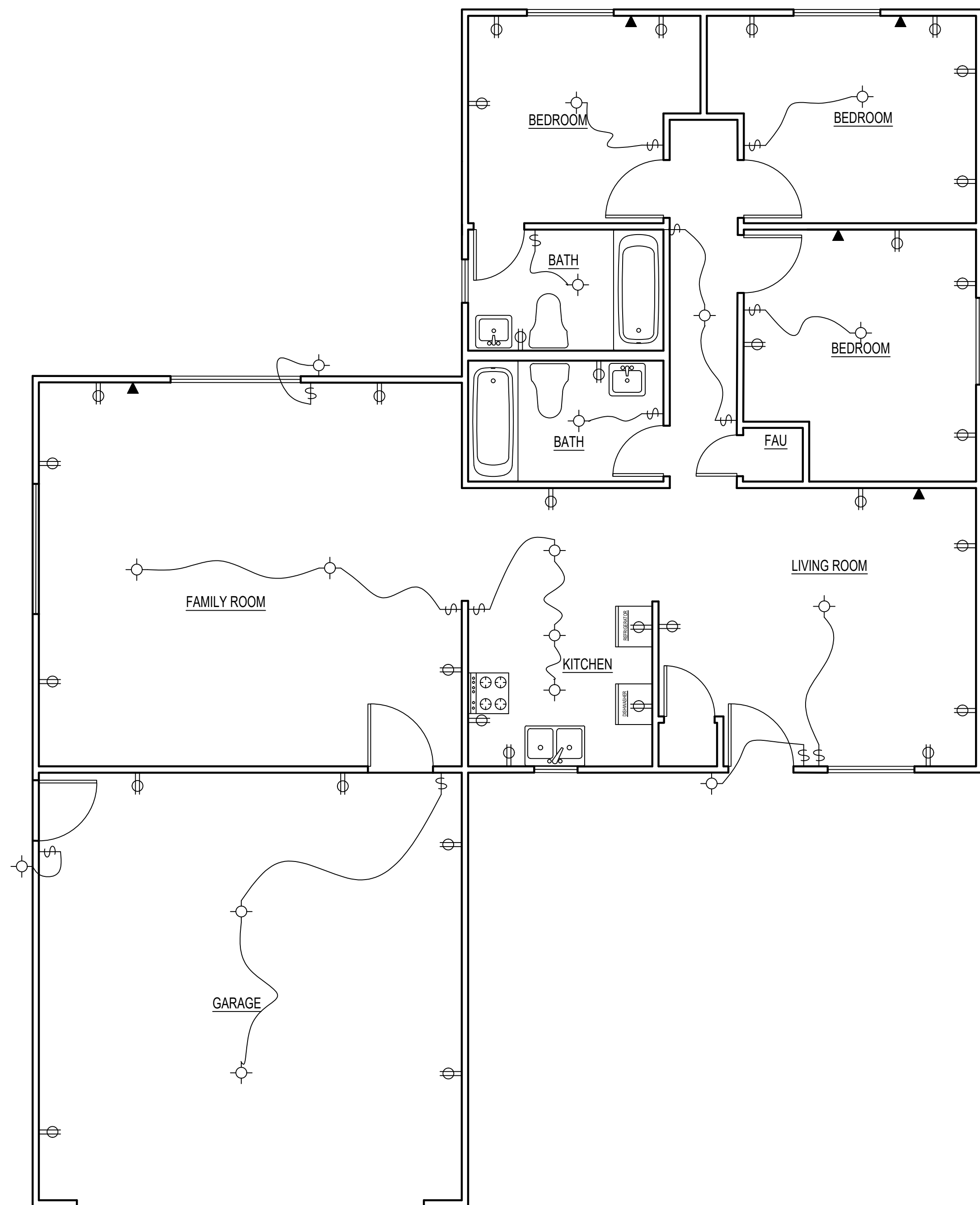
RESIDENTIAL REMODEL
167 MADISON STREET
OCEANSIDE CA 92057

REVISION:

1. TODAY REVISED
- 2.
- 3.
- 4.
- 5.

PROJECT NR: 1234
 DATE: DATE
 DRAWN BY: Charles Froedge
 CHECKED BY: Al Whitney
 SCALE: 1/4" = 1'-0"
 SHEET NUMBER:

S1.0



GENERAL SHEET KEYNOTES

- 1 INSTALLATION OF ALL WORK SHALL BE IN ACCORDANCE WITH THE FOLLOWING REGULATIONS, CODES, ETC.
- 2 LOCAL CODES AND ORDINANCES B. THE EDITION OF THE NATIONAL ELECTRICAL CODE NFPA 70 (NEC) IN EFFECT.
- 3 PRIOR TO BEGINNING ANY WORK, SECURE NECESSARY PERMITS OR CLEARANCES FROM THE AUTHORITIES HAVING JURISDICTION. PROVIDE ALL LABOR AND MATERIALS FOR A COMPLETE INSTALLATION. WORK SHALL BE EXECUTED BY EXPERIENCED ELECTRICIANS WHO ARE LICENSED IN THE JURISDICTION WHERE THE PROJECT IS LOCATED.
- 4 THE CONTINUITY OF ALL EXISTING CIRCUITS TO REMAIN SHALL BE MAINTAINED.
- 5 THE ELECTRICAL PLANS ARE DIAGRAMMATIC ONLY. COORDINATE ELECTRICAL EQUIPMENT LOCATION AND INSTALLATION WITH EQUIPMENT BEING SERVED. PROVIDE ALL POWER AND TELECOMMUNICATION FINAL CONNECTIONS TO THE SYSTEM FURNITURE AS REQUIRED.
- 6 ALL EQUIPMENT SUCH AS RELAYS, SWITCHES, PANELS, AND OTHER APPURTENANCES SHALL HAVE IDENTIFICATION PLATES OF BLACK LAMINATED PLASTIC WITH 1/2" WHITE LETTERS. ALL JUNCTION BOXES IN CEILING CAN BE MARKED WITH BLACK PERMANENT MARKER ON COVER PLATES AS PANEL DESIGNATION AND CIRCUIT NUMBER FROM WHICH THEY ARE FED.
- 7 ALL CONDUCTORS SHALL BE IDENTIFIED. ALL WIRING DEVICES SHALL BE USED WITH TYPED LABEL ON THE COVER PLATE IDENTIFYING THE PANEL DESIGNATION AND CIRCUIT NUMBER FROM WHICH THEY ARE FED.



FROEDGE
167 MADISON STREET
OCEANSIDE CA 92057
 760-908-1808

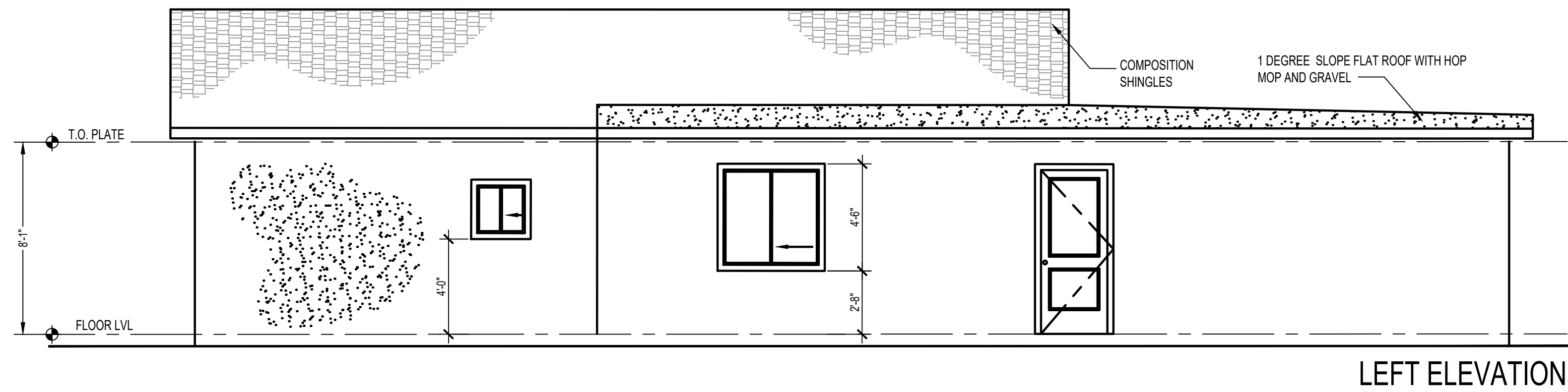
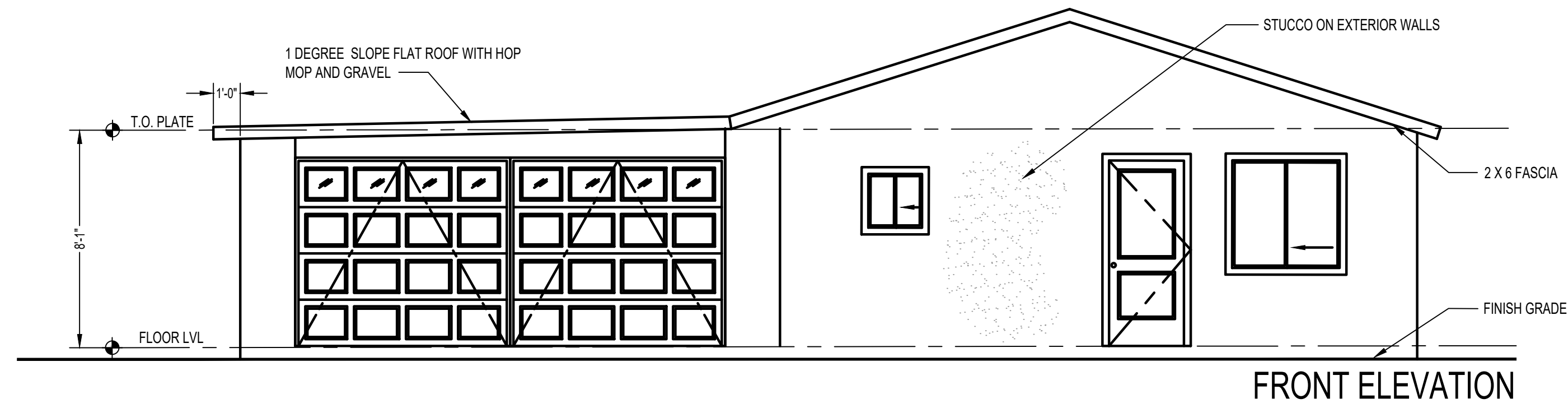
RESIDENTIAL REMODEL
167 MADISON STREET
OCEANSIDE CA 92057

REVISION:

1.	TODAY REVISED
2.	
3.	
4.	
5.	

PROJECT NR:	1234
DATE:	DATE
DRAWN BY:	Charles Froedge
CHECKED BY:	Al Whitney
SCALE:	AS NOTED
SHEET NUMBER:	

E-1.0



ELEVATION KEYNOTES

- 1 FIBERGLASS ROOFING SHINGLES WITH CLASS-A FIRE RATING.
- 2 VINYL FASCIA, RAKE AND SOFFIT TRIM.
- 3 PREFINISHED ALUMINUM GUTTER AND DOWNSPOUT SYSTEM WITH SPASHBLOCK.
- 4 ALUMINUM 24" DORMER VENT WITH BIRDSCREEN.
- 5 BRICK VENEER.
- 6 ALUMINUM WINDOWS WITH DUAL GLAZING.
- 7 STEEL ENTRY DOOR WITH SIMULATED WOOD PANEL DESIGN AND THERMAL INSULATION.
- 8 LIGHTED HOUSE NUMBER FIXTURE.
- 9 DECORATIVE LIGHT FIXTURE.
- 10 SECTIONAL STEEL GARAGE DOOR WITH RAISED PANEL DESIGN AND THERMAL INSULATION.
- 11 VINYL SHUTTERS TYPE 'A'.
- 12 BRICK ROWLOCK AND SOLIER COURSES.

.\\dcl-Logo-Titleblock.jpg

FROEDGE
 167 MADISON STREET
 OCEANSIDE CA 92057
 760-906-1806

RESIDENTIAL REMODEL
 167 MADISON STREET
 OCEANSIDE CA 92057

REVISION:

- 1. TODAY REVISED
- 2.
- 3.
- 4.
- 5.

PROJECT NR: 1234
 DATE: DATE
 DRAWN BY: Charles Froedge
 CHECKED BY: Al Witney
 SCALE: AS NOTED
 SHEET NUMBER:

ELEVATIONS
 SCALE : 1/4"= 1-0'

"100% Deliverable Submiss